

Graph each function below.

1.  $y = 2 \cos x$

Amplitude 2

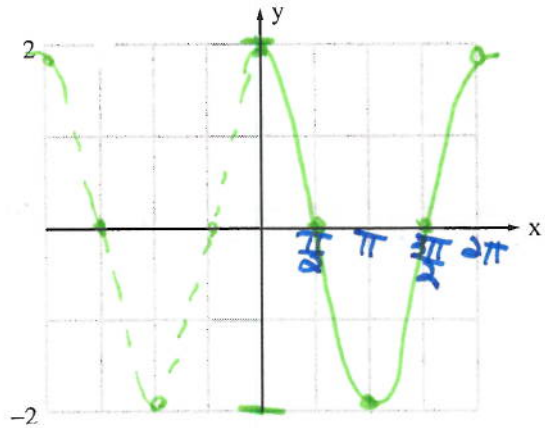
Reflection NO

Period  $2\pi$  (intervals  $\frac{\pi}{2}$ )

Phase Shift NO

Vertical Shift NO

max(s)  $(0, 2)$   $(2\pi, 2)$  min.  $(\pi, -2)$



2.  $y = -3 \sin x$

Amplitude 3

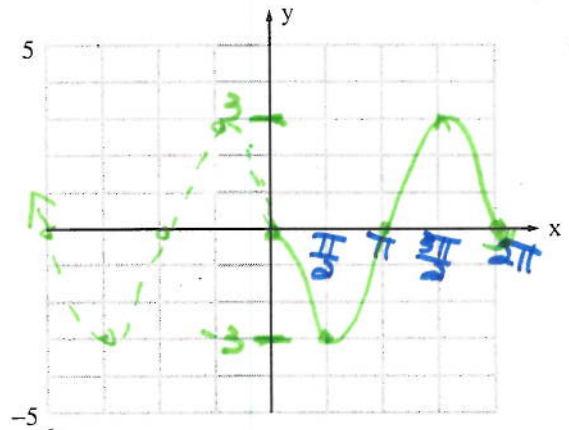
Reflection yes

Period  $2\pi$  (intervals  $\frac{\pi}{2}$ )

Phase Shift NO

Vertical Shift NO

max.  $(\frac{3\pi}{2}, 3)$  min.  $(\frac{\pi}{2}, -3)$



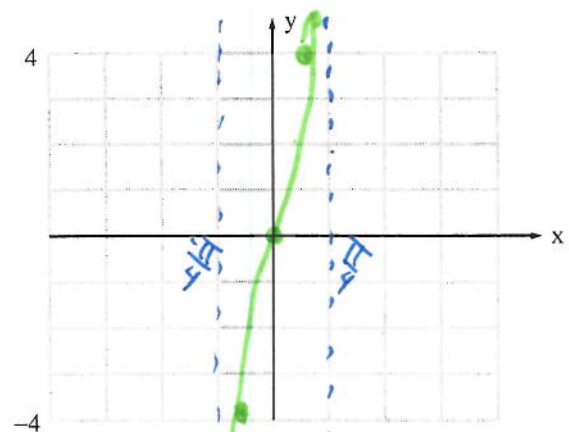
3.  $y = 4 \tan 2x$

Reflection NO

Period  $\frac{\pi}{2}$

Phase Shift NO

Vertical Shift NO



extra points:  $(\frac{\pi}{8}, 4) \rightarrow (\frac{\pi}{8}, -4)$